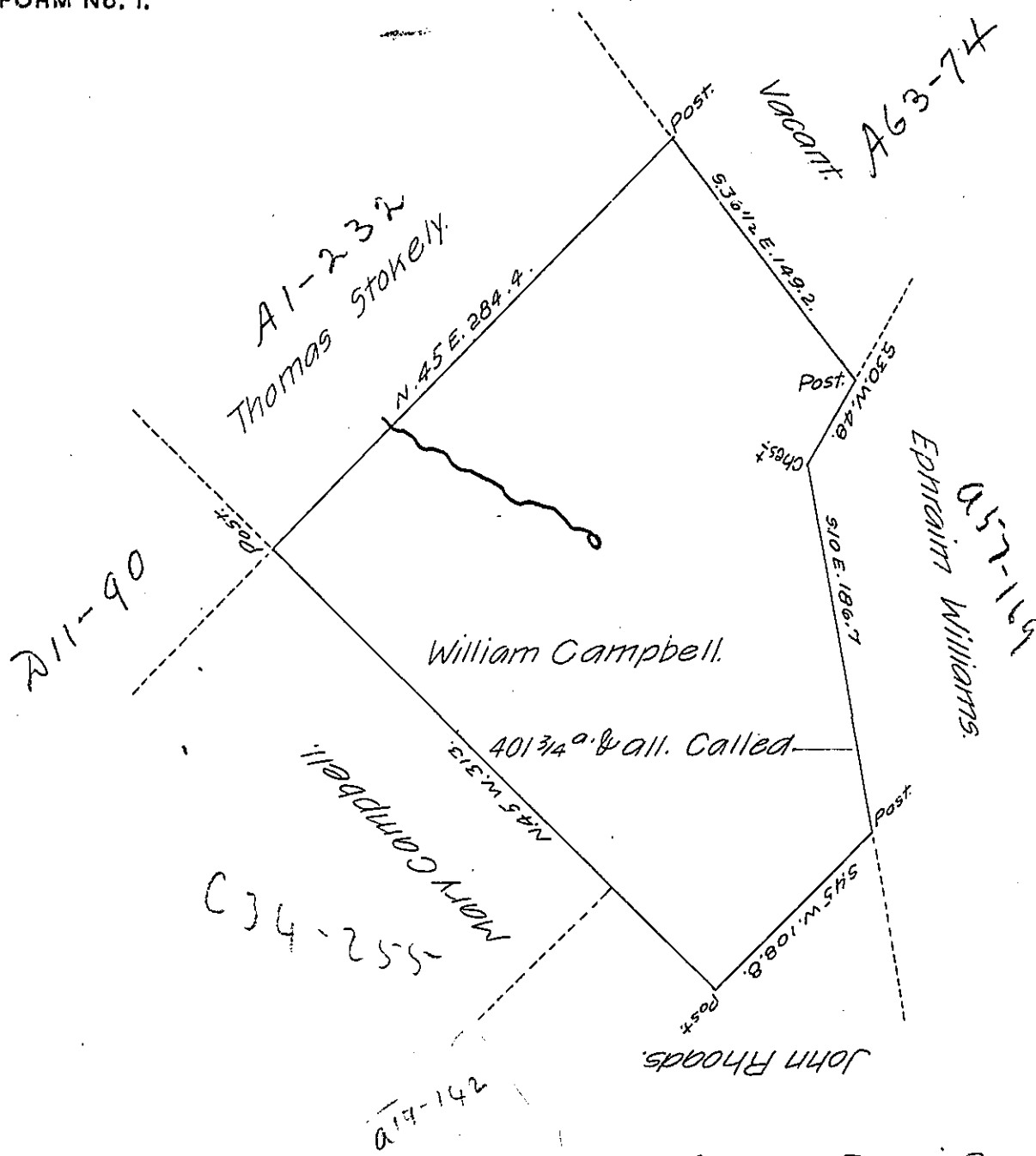


FORM No. 1.



Situate on the head Waters of Shade Run a Branch of Stony Creek in Stony Creek Township formerly Bedford now Somerset County and Surveyed the 5th. day of August 1795. In pursuance of a Warrant dated the 4th. day February 1794.

George Woods, Jun^r, D.S.

To Daniel Brodhead, Esq^r,
Surveyor General.

IN TESTIMONY that the above is a copy of the original remaining on file in the Department of Internal Affairs of Pennsylvania, made conformably to an Act of Assembly approved the 16th day of February, 1833, I have hereunto set my Hand and caused the Seal of said Department to be affixed at Harrisburg, this twelfth day of November, 1906

Isaac R. [Signature]
Secretary of Internal Affairs.